

**UNIVERSITY OF ARKANSAS**  
**RFP #013122**  
**Q&A ADDENDUM #4**

1. Can the University provide details on how their recycling is handled today (i.e. single stream), and who their recycling hauler is today? If handled multiple ways (i.e., different process and hauler for athletics vs. campus) please provide those details.

Answer:

Arkansas Union & Athletics: Bottles and cans are comingled into a single stream and are picked up by Waste Management. Waste Management also picks up paper. Cardboard is baled and picked up by a different vendor.

Facilities Management/Academic Buildings: Collects white paper, mixed paper, cardboard, and cans & bottles in four different streams. The cans & bottles consist of plastic bottles (#1-7), steel cans & bottles and aluminum cans & bottles. Items are hauled by Smurfit-Kappa.

Housing: Collects aluminum cans only. These are picked up by Facilities Management.

2. Can responders utilize their own forms, using a very similar format, for Attachments D, E, and F due to the number of products that will be listed?

Answer:

Yes, provided the forms contain the same information and are presented in the same format.

3. What is the college reopening plan for the Spring Semester regarding presential or online classes?

Answer:

Open, Spring 2022.

4. What is the estimated full-time enrollment after the current COVID-19 for the upcoming Spring Semester?

Answer:

Spring, 2022 Preliminary Enrollment: 27,240.

5. Who is your present Snack Vending provider?

Answer:

Imperial.

6. Who is your present Beverage Vending provider?

Answer:

Pepsi.

7. Who is your present Food Service provider?

Answer:

Chartwells for general campus; Levy for Athletics.

8. Who is your present Pouring Rights provider?

Answer:  
Pepsi.

9. Are there any Micro Markets at the College? If not, are there plans to add Micro Markets?

Answer:  
There are no Micro Markets, and there are no plans to add them.

10. Could you please provide annual sales by machine (Pre-COVID), commission rates, and amount of commissions paid?

Answer:  
Sales included with RFP.

11. Could you please provide present commission rates received?

Answer:  
There are currently no commissions.

12. Are you currently receiving a Minimum Annual Guarantee (MAG)? If so, how much is the current amount?

Answer:  
Company pays UAF a minimum guaranteed Vending License fee of \$2,346,479.00, covering the initial and renewal terms of Agreement.

13. Can you provide us with any corporate sponsorship or additional incentives that may currently be received?

Answer:  
Sponsorship payments made by Company for FY 2021-22 = \$1,541,158.  
A \$3/case foodservice sales bonus was paid throughout the agreement term on each case of Company Beverages that is greater than 1% of the previous year's base volume of cases.

14. Is there a surcharge for credit card transactions? If so, what is the amount?

Answer:  
No.

15. Is the proposed contract term negotiable?

Answer:  
No.

16. How often has the current vendor(s) requested a price change in the past two years?

Answer:  
Twice.

17. Can you please provide a couple of pictures of your present vending machines in place?

Answer:  
See Attachment A.

18. Can you provide a breakdown of volume and equipment by category/area?

Answer:

Vending – 4,919 cases

Campus – 31,231 cases

Athletics – 15,279 cases

19. Please provide a full volume breakdown for all direct delivered bottle/can products by package, brand, size and case count by product category (including energy, water, juice, soda, etc.). For example, referencing the water category below:

24 pack – 12oz Dasani – 200 cases

24 pack – 20oz Dasani – 300 cases

12 pack – 23oz Smartwater – 300 cases, etc.

Answer:

See Attachment B.

20. Please provide a full volume breakdown for all vending bottle/can volume by package, brand, size and case count by product category (including energy, water, juice, soda, etc.).

Answer:

See Attachment B.

21. Please confirm the types of post mix fountain equipment required by location. For example, at the Student Union, will the University need an 8 valve Ice Combo (for self-serve) or a Drop-In (for crew serve) unit?

Answer:

194 Drop-In Units / 25 Ice Combo Units.

22. Can you provide a Razor\$ Card to allow us to test with our card readers to ensure full integration with our vending machines?

Answer:

Yes.

23. Can you provide a breakdown of vending equipment by type (Glass Front Vendor vs. Stack Vendor)?

Answer:

57 Glass Front Vendors / 60 Stack Vendors.

24. Can you provide a breakdown of coolers by size?

Answer:

113 Double Door Coolers / 41 Single Door Coolers / 27 Countertop Coolers.

25. Do the student meal plans include any bottled beverages?

Answer:

Our grab-n-go meal trade option includes 16.9 oz waters and various cans.

26. Does the University or concessionaire currently own the ice makers on the fountain equipment or are they provided by your current beverage provider?

Answer:

The University owns all ice machines in Chartwells locations.

27. Please confirm how many days per week the University is receiving beverage deliveries from our current beverage provider. Are there any locations on campus that require more frequent deliveries due to either higher volume and/or storage limitations?

Answer:

5 days per week.

28. Does the University use bulk CO2 or purchase from another company other than your current beverage provider? If the University will need their beverage provider to provide CO2, please confirm the annual volume and sizes needed (i.e., 20 lb. or 50 lb. containers).

Answer:

The University uses an outside vendor for the larger bulk containers. Pepsi provides 12 of the smaller options.

29. Does the University purchase cups through your current beverage supplier? If so, please confirm the total annual volume as well as the size, cup type and locations that are purchasing these items.

Answer:

Yes. Items below purchased across campus:

Cup 12oz Paper Compost 1000C	10
Cup 22oz Paper Compost 1000C	15
Cup 32oz Paper Compost 500C	391
Cup 32oz DP 480C 32PCM	89
Lid 22oz Paper Compost 2000C	14
Lid 32oz Paper Compost 1000C	253
Lid 32oz 960C 328L-1002250	6

30. (Question from on-site tour). Will the new Market have a beverage cooler?

Answer:

The new Market at the 1021 W Dickson complex will have a 3-door, glass front walk-in cooler, width 7', depth 9', height 7'. The cooler is intended for beverages and snacks.



ATTACHMENT A

CALORIES COUNT  
CHECK THEN CHOOSE

FOR REPAIR SERVICE  
CALL 1-800-999-7979

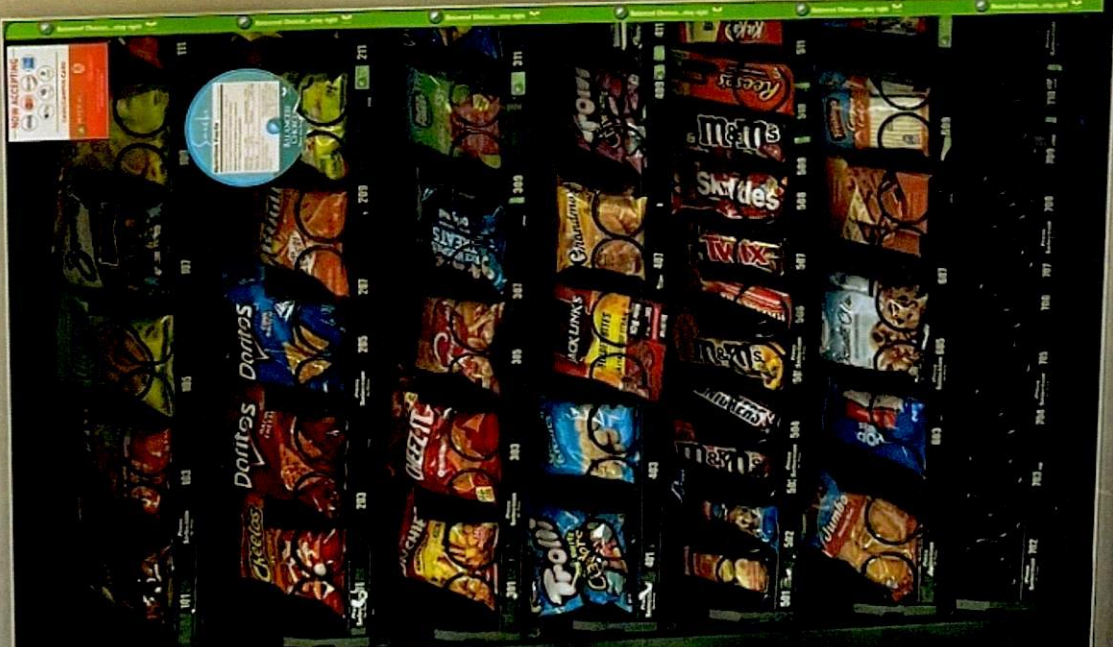


pepsi | 



REFRESHING THE  
RAZORBACKS

1-800-999-7979







# pepsi.

A vending machine panel for Pepsi and Aquafina drinks. The panel features the Pepsi logo and the text "pepsi." in a large, stylized font. Below the logo, there are several buttons for different drink options: 1. A button for Pepsi Next. 2. A button for Pepsi Next. 3. A button for Pepsi Next. 4. A button for Pepsi Next. 5. A button for Aquafina. 6. A button for Aquafina. 7. A button for Aquafina. 8. A button for Aquafina. 9. A button for Aquafina. 10. A button for Aquafina. The panel also includes a "CALORIES COUNT CHECK THE CHOICE" sign and a "NEW! 100% RECYCLED BOTTLES" sign.

A vending machine control panel with a keypad and a coin slot. The panel features a keypad with buttons for "A00", "C00", "D00", "E00", "F00", "G00", "H00", "I00", "J00", "K00", "L00", "M00", "N00", "O00", "P00", "Q00", "R00", "S00", "T00", "U00", "V00", "W00", "X00", "Y00", "Z00". Above the keypad, there is a coin slot and a "CALORIES COUNT CHECK THE CHOICE" sign. To the left of the keypad, there is a "NEW! 100% RECYCLED BOTTLES" sign and a "PEPSI" sign. To the right of the keypad, there is a "CALORIES COUNT CHECK THE CHOICE" sign and a "NEW! 100% RECYCLED BOTTLES" sign.





**ATTACHMENT B**

07/01/2020 - 06/30/2021

Product	Volume
Aquafina Base Total	242
LifeWTR Total	183
Lipton Brisk Fruit Total	27
Lipton Brisk Total	29
<b>1 Liter Total</b>	<b>481</b>
Mt Dew Total	2
Pepsi Total	1
<b>1.25 Liter Total</b>	<b>3</b>
Schweppes Total	14
<b>10oz/296ml Total</b>	<b>14</b>
Evolve Total	9
Gatorade Total	23
<b>11.16oz/330ml Total</b>	<b>32</b>
Starbucks Cold & Crafted Total	1
Starbucks Cold Brew Total	92
<b>11oz/325ml Total</b>	<b>93</b>
Aquafina Base Total	3,271
Gatorade G2 Total	11
Gatorade Total	10
Mt Dew Total	29
Pepsi Dt Total	38
Pepsi Total	24
Tropicana PP & Ess Total	5
<b>12oz/355ml Total</b>	<b>3,388</b>
Frappuccino Total	352
<b>13.7oz Total</b>	<b>352</b>
Voss Total	2
<b>13oz/384ml Total</b>	<b>2</b>
Lipton Pure Leaf Total	35
Muscle Milk Pro Total	57
Muscle Milk Total	37
<b>14oz/414ml Total</b>	<b>129</b>
Dole Total	678
Naked Jce Smoothie Total	6
Ocean Spray Total	133
Tropicana Juice Total	9
<b>15.2oz/450ml Total</b>	<b>826</b>
Aquafina Base Total	7,694

Gatorade Bolt 24 Total	24
Gatorade G Zero Total	1
Gatorade Organic Total	-1
Mt Dew Total	46
ONE Total	2
Pepsi Dt Total	15
Pepsi Total	19
Pepsi Wild Cherry Total	17
Pepsi Zero Sugar Total	1
Tropicana Twstr NCB Total	6
<b>16.9oz/500ml Total</b>	<b>7,824</b>
Lipton Pure Leaf Total	339
<b>18.5oz /547ML Total</b>	<b>339</b>
Crush Total	16
Mt Dew Total	51
Mug Total	7
Pepsi Dt Total	7
Pepsi Total	32
Pepsi Wild Cherry Total	15
Pepsi Zero Sugar Total	9
Schweppes Total	12
Sierra Mist LL RS Total	14
<b>2 Liter Total</b>	<b>162</b>
Gatorade Total	145
<b>2.8oz/83ml Total</b>	<b>145</b>
Aquafina Base Total	6,214
Crush Total	52
Dole Lmnd Total	25
Gatorade Propel Total	176
Gatorade Total	736
Gatorade Zero Total	19
LifeWTR Total	168
Lipton Brisk Total	1
Lipton Iced Tea Total	37
Mt Dew Baja Blst Total	2
Mt Dew Code Red Total	26
Mt Dew Dewmocracy Total	19
Mt Dew Live Wire Total	3
Mt Dew Total	532
Mug Total	18
Pepsi Blue Total	1
Pepsi Dt Total	445
Pepsi Total	606
Pepsi Vanilla Total	1
Pepsi Wild Cherry Total	18
Pepsi Zero Sugar Total	38
Schweppes Total	14
Sierra Mist LL RS Total	167
SoBe Life Water Total	1
<b>20oz/591ml Total</b>	<b>9,317</b>



LifeWTR Total	239
<b>23.7oz/700ml Total</b>	<b>239</b>
Gatorade G2 Total	1
Gatorade Total	372
Gatorade Zero Total	139
<b>28oz/828ml Total</b>	<b>512</b>
Gatorade Total	6
<b>32oz/950ml Total</b>	<b>6</b>
Big Red Total	2
Crush Total	117
Dt Sierra Mist LL ZS Total	3
Lipton Brisk Total	10
Mt Dew Code Red Total	16
Mt Dew Total	556
Mug Total	61
Pepsi Dt Total	236
Pepsi Total	438
Pepsi Wild Cherry Total	315
Pepsi Zero Sugar Total	154
Sierra Mist LL RS Total	132
<b>Can 12P Total</b>	<b>2,039</b>
Yachak Total	5
<b>Can 15.5oz/459ml Total</b>	<b>5</b>
BANG KETO Coffee Total	8
Starbucks DS Energy Total	193
Starbucks TS Energy Total	127
<b>Can 15oz/444ml Total</b>	<b>328</b>
AMP Total	17
BANG Naturals Total	25
BANG Tea Total	6
Bang Total	930
Bubly Bounce Total	19
Bubly Total	125
Mt Dew AMP Total	44
Mt Dew Energy Total	84
Mt Dew Kickstart Total	170
Mt Dew Total	49
Pepsi Total	38
Rockstar Total	132
Yachak Total	23
<b>Can 16oz/473ml Total</b>	<b>1,661</b>
Mt Dew Total	8
<b>Can 24P Total</b>	<b>8</b>
Starbucks Dble Shot Total	87
<b>Can 6.5oz Total</b>	<b>87</b>

Mt Dew Total	15
Pepsi Total	12
<b>Can 6P Total</b>	<b>27</b>
Pepsi Total	2
Schweppes Total	12
<b>Can 7.5oz/Can 221ml Total</b>	<b>14</b>
Bubly Bounce Total	9
Bubly Total	240
Pepsi Total	15
<b>Can 8P Total</b>	<b>264</b>
Starbucks Cold Brew Total	105
<b>Can 9.6oz/2984ml Total</b>	<b>105</b>
<b>B&amp;C Total</b>	<b>28,401</b>
Frappuccino Total	348
<b>13.7oz Total</b>	<b>348</b>
Muscle Milk Pro Total	6
Muscle Milk Total	3
<b>14oz/414ml Total</b>	<b>9</b>
Dole Total	91
Ocean Spray Total	26
<b>15.2oz/450ml Total</b>	<b>117</b>
Gatorade Bolt 24 Total	15
<b>16.9oz/500ml Total</b>	<b>15</b>
Mt Dew Kickstart Total	15
<b>16oz/473ml Total</b>	<b>15</b>
Lipton Pure Leaf Total	50
<b>18.5oz /547ML Total</b>	<b>50</b>
Aquafina Base Total	249
Crush Total	74
Dole Lmnd Total	60
Gatorade Propel Total	163
Gatorade Total	327
Gatorade Zero Total	17
LifeWTR Total	158
Lipton Brisk Total	0
Lipton Iced Tea Total	41
Mt Dew Code Red Total	63
Mt Dew Dewmocracy Total	40
Mt Dew Ice Total	0
Mt Dew Total	305
Mug Total	45

Pepsi Dt Total	102
Pepsi Total	251
Pepsi Vanilla Total	29
Pepsi Wild Cherry Total	95
Pepsi Zero Sugar Total	35
Schweppes Total	10
Sierra Mist LL RS Total	40
<b>20oz/591ml Total</b>	<b>2,103</b>
Crush Total	1
<b>Can 12P Total</b>	<b>1</b>
Starbucks DS Energy Total	376
Starbucks TS Energy Total	4
<b>Can 15oz/444ml Total</b>	<b>379</b>
AMP Total	4
Bang Total	523
Bubly Total	-1
Mt Dew AMP Total	15
Mt Dew Kickstart Total	71
Rockstar Total	45
<b>Can 16oz/473ml Total</b>	<b>658</b>
Mt Dew Code Red Total	2
Mt Dew Total	6
Pepsi Dt Total	1
Pepsi Total	5
Pepsi Wild Cherry Total	5
<b>Can 6P Total</b>	<b>19</b>
Starbucks Cold Brew Total	66
<b>Can 9.6oz/2984ml Total</b>	<b>66</b>
<b>FSV</b>	<b>3,782</b>